

# GRAVITY

GLOBAL (PTY) LTD



COMPANY PROFILE

Gravity Global is the leading work at height safety solutions provider in South Africa with an international footprint throughout Africa, Europe, the Middle East, India and Australia. We offer a wide range of safety at height systems and consultation services.

Gravity was established in 1999 and is well known as the foremost specialist in the field.

## OUR SERVICES

We primarily focus on the design, supply and installation of safety systems for work at height but we believe that our biggest advantage is that we cater for our clients' unique needs by customising and engineering solutions to solve the specialised challenges they face.

### OUR SOLUTIONS INCLUDE:

- Vertical and Horizontal lifelines
- Fall arrest, work positioning and rope access anchor and rail systems
- Davit arms
- Electrical rail positioning systems
- Building maintenance units
- Specialised cradle systems
- Mobile fall protection and rope access anchor systems
- Custom engineered solutions

Our systems are designed and installed to EN standards while catering for African economic conditions.





# BUILDING MAINTENANCE UNITS

Custom designed, multi-purpose, simple to complex systems that are easy to use, the BMU solution provides a versatile means of access for a range of maintenance options on hard-to-reach facades. It can be designed to tuck away on the roof or in a purpose-built stowaway. Design and access options are limitless and most systems provide for a suspended platform with additional hoist point.

## FEATURES AND BENEFITS:

- Work platform with guardrails around to provide comfortable, safe work environment.
- Mechanically activated safety brake system ensures 100% safety even if electrical supply is interrupted. Adaptable to a range of orientations and façade designs (can be applied virtually anywhere).
- Can be installed on tracks / on wheels / on davit arm system or with a static base (wide design range).
- Scalable working load limit according to scope of design.
- Entire system is customizable according to design envelope and scope of use.
- Can incorporate separate hoisting system for ease of changing cladding or window panes.
- Leading German technology and performance standards, for exceptional durability and safety.



## APPLICATIONS:

- Facilitates safe, easy and fast façade access and maintenance.
- Suited to difficult access solutions for complex layouts.
- Architectural highlights and monuments.
- Commercial office and mall roofs.
- Residential and agricultural roofs.
- Airport, educational and hospital building roofs.
- Flagship and ultra-high buildings.



# KEY CLIENTS

Our key clients include, but are not limited to:



# GLOBAL FOOTPRINT



# STAFF COUNT AND MANAGEMENT STRUCTURES

The Gravity Group currently employs 50+ staff members, conveniently situated throughout South Africa, Africa and Australia.

## DIRECTORS



GERT FORSTER  
Director



ANDRIES NEL  
Director



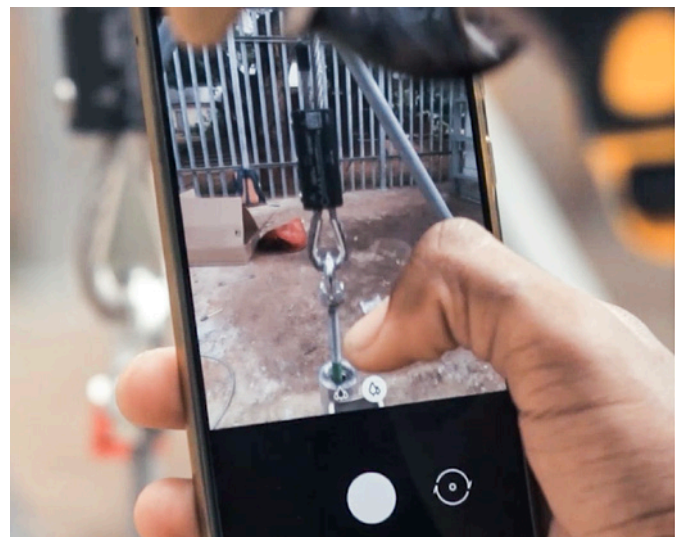
RYNO GRIESEL  
Director

## KEY FOCUS AREAS

One of the key pillars of our success is the quality of our services and products, which we continually update and improve.

We also value innovation and as a result, we are often the first in our industry to introduce new methods, designs and products.

Over the last two years, we have been investing heavily in the digitisation of our systems to reduce errors and optimise accuracy. Our Gravity Quality System effectively manages the liability that goes with a work-at-height safety system, on behalf of the customer. That way, we know that we are ensuring complete customer support, where our relationship with our customers really only starts after the sale is made – the point at which most other service providers' support often comes to an end.





## CONTACT INFORMATION

☎ **086 110 1213**  
@ **www.gravityglobal.co.za**

**General Manager: Adriaan Bester**

---

General Enquiries & Projects:

Adriaan Bester  
Samson Mothau

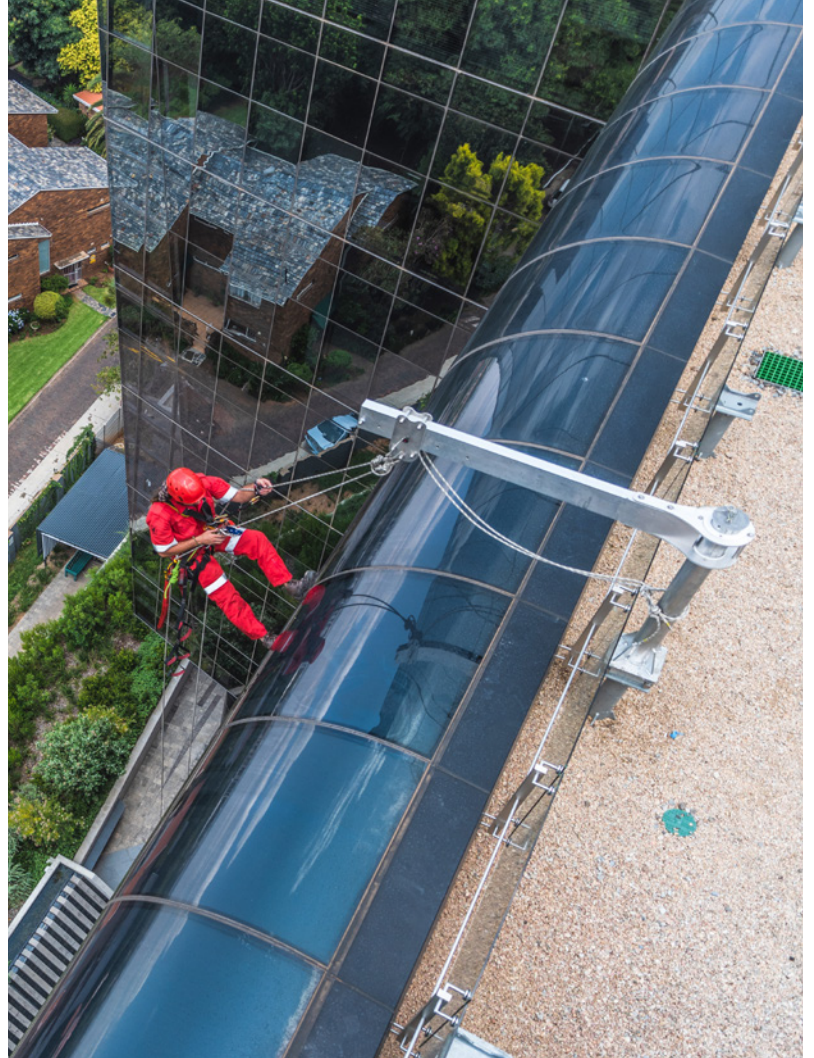
Gqeberha Branch:

Ronel Klopper

E-Mail: [projects@gravitygh.co.za](mailto:projects@gravitygh.co.za)

**HEAD OFFICE:**

Unit 2 Lachelle House,  
97 Sovereign Drive,  
R21 Corporate Park,  
Irene, Pretoria,  
South Africa



***Follow us on Social Media:***

 [https://bit.ly/GravityGH\\_Fb](https://bit.ly/GravityGH_Fb)

 [https://bit.ly/GravityGH\\_Ins](https://bit.ly/GravityGH_Ins)

 [https://bit.ly/GravityGH\\_Yt](https://bit.ly/GravityGH_Yt)

 [https://bit.ly/GravityGH\\_In](https://bit.ly/GravityGH_In)