

User Manual

Yellow

EyeAnchor

DOC038-UK-19.07.15



Table of content

1.	Coordinates of the manufacturer	3
2.	Description	3
3.	Declaration of conformity.....	3
4.	Resistance of the anchorage.....	4
5.	System configuration.....	4
6.	Structure on which the Yellow AnchorEye is installed	5
6.1.	Concrete	5
6.2.	Steel beam.....	5
7.	Preliminary checks.....	6
8.	User instructions.....	7
9.	Prohibited use	8
10.	Caution.....	8
11.	Operational life of the installation	8
12.	Engravings.....	9
13.	Maintenance and inspection	10
14.	Identification sheet.....	11

1. Coordinates of the manufacturer

FALLPROTEC SA.
43-45, Rue Op Zaemer
L-4959 Bascharage
Luxembourg
Tél: +352 26 55 09 30
Fax: +352 26 55 09 30 55
Email : ft@fallprotec.com
www.fallprotec.com

2. Description

- The Yellow Anchor Eye is permanently installed on a building, or any other structure, that needs maintenance work during which the staff is exposed to a risk of fall from height.
- The Yellow Anchor Eye is made of stainless steel AISI304 and is powder coated with a RAL 1003 paint.
- The anchor point must be fixed to the host structure with one M12 bolts, quality A2.
- Two users attach on the anchor point and can operate in a radius of 2 m around it.

3. Declaration of conformity

Fallprotec certify that the Yellow Anchor Eye is approved for protection against fall from a height of one person.

The Yellow Anchor Eye is conform to the standard EN 795 : A 2012 and TS 16415:2013/A. The certificate of conformity was delivered by:

APAVE Sudeurope S.A.S.
F-13322 Marseille

Notifying body No.: CE0082

4. Resistance of the anchorage

In the event of a fall, the anchor point and the structure are subject to a force of 7 kN, to be multiplied by the safety factor of 2. (The anchor point has been tested at 13 kN).

The installers will insure that the host structure is suitable and is able to withstand the force.

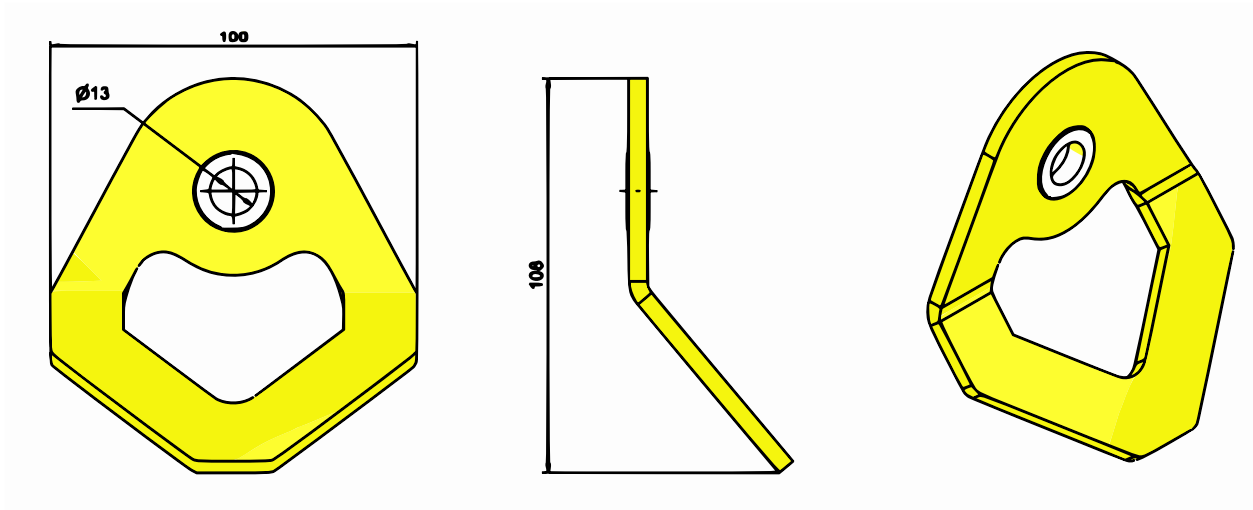


Fig. 1 Specifics of Yellow Anchor Eye

5. System configuration

- The Yellow Anchor Eye can be installed in 3 configurations: to the ground, to the wall and to the ceiling.
- It is advised to install the Yellow Anchor Eye at 1,50 m over the walkway in order to reduce the height of fall. It is however allowed to install the Yellow Anchor Eye on the walkway level. Hence the height of fall will be more important and the installers must control that there is enough clearance so that the person is stopped before touching an object.
- It is strictly forbidden to install the Yellow Anchor Eye under the walkway level.
- The Yellow Anchor Eye should turn freely around the bolt.
- The Eye Anchor attaches to a concrete wall or floor with a resistance of 25 MPa or more, or to a metal structure through a M12 bolt quality A4, A2 or 8.8.

6. Structure on which the Yellow AnchorEye is installed

6.1. Concrete

- The Yellow Anchor Eye can be installed on concrete or a concrete slab having strength of 25 Mpa or more.
- The fixing is done by one M12 bolt quality A4, A2 or 8.8.

6.2. Steel beam

- The Yellow Anchor Eye can be installed on a steel beam which has a minimal thickness of 8mm and withstands the force of 13 kN. The fixing is done with one M12 bolt, quality A4, A2 or 8.8.

7. Preliminary checks

The following checks are required before the use of the Yellow Anchor Eye anchoring eye.

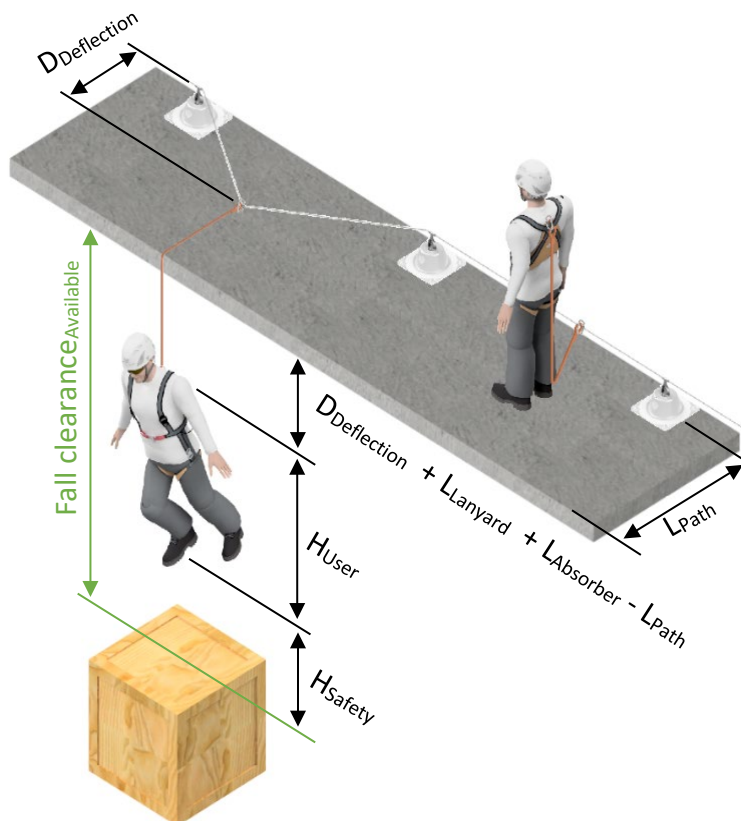
1. The user of the Yellow Anchor Eye must have a good physical shape and not be susceptible to vertigo
2. The user must have received adequate training to use:
 - PPE fall arrest equipment and have read the recommendations to use the material associated with Yellow Anchor Eye anchoring eye, harnesses, lanyards and connectors.
 - Rescue equipment in case of a fall.
3. At least two people are required to perform work at heights; one of two people is likely to help his colleague in case of accident.
4. A rescue plan must be in place to allow the evacuation of the person who fell in less than 15 minutes. The rescue equipment shall be readily accessible and located in the vicinity of the anchor point.
5. Not more than two persons attach to the Yellow Anchor Eye.
6. The user will be equipped with:
 - A full body harness with two anchor points, one back and one sternal anchor points according to EN 361.
 - The sternal anchor point will be used to connect to the anchor point. The dorsal anchor point is for rescue operations.
 - A lanyard with energy absorber according to EN 354 / EN 355. The total length of the lanyard should not exceed two meters.
 - Two twist lock karabiners made of steel, conform to EN 362.
7. Arrived in the area where the user attached himself on the Yellow Anchor Eye, he checks:
 - That the Yellow Anchor Eye, harness and connector are in good condition.
 - That there is no obstruction under the walk way that could reduce the clearance specified on the warning plate.
 - The following checks are to be carried on:
 - The Yellow Anchor Eye anchor point must be in good condition.
 - The connector should close automatically
 - The safety lock of the karabiner must turn automatically.
8. The equipment must be removed from service if:
 - The user finds one or more abnormalities
 - The energy absorber has deployed.
 - The Yellow Anchor Eye has stopped a fall and the anchor point is deformed.
 - The equipment will not be used until a competent person have replaced the defective components after stopping a fall
9. The user wears a harness according to EN 361 a lanyard equipped with a shock absorber according to EN 355 and connectors conform to EN 362. Instead of the lanyard, he can also use a retractable block conform to EN360.

8. User instructions

1. The lanyards connector must be fixed directly on the Yellow Anchor Eye
2. The end user can circulate in a radius of 2 m around the Yellow Anchor Eye.
3. The minimum clearance must be superior of the height of fall so that a falling user don't hit an obstacle during the fall.

The height of fall is the sum of the terms given below :

- $D_{\text{Deflection}}$: the deflection of the rigid anchor line
- H_{Safety} : safety distance (1m)
- **Fall clearance_{Required}** : minimal height calculated and required in case of a fall
- **Fall clearance_{Available}** : actual height available between the path and the first obstacle
- L_{Path} : distance from the rigid anchor line to the edge
- L_{Lanyard} : length of the lanyard (< 2m)
- L_{Absorber} : deployment of the energy absorption system (< 0,8m)
- H_{User} : user's height



$$\text{Fall clearance}_{\text{Required}} = D_{\text{Deflection}} + L_{\text{Lanyard}} + L_{\text{Absorber}} - L_{\text{Path}} + H_{\text{User}} + H_{\text{Safety}}$$

$$\text{Fall clearance}_{\text{Required}} < \text{Fall clearance}_{\text{Available}}$$

CAUTION: The location where the Yellow Anchor Eye is installed must be chosen so that the user does not risk a fall when he will connect to the anchor point.

CAUTION: Two persons attach to the anchor point at the same time.

CAUTION : Do not step on the Yellow Anchor Eye.

9. Prohibited use

- A single user who works in height and which is not under the control of a second person who can rescue him if necessary.
- More than 2 persons attached simultaneously to the anchor point.
- Obstacles under the walkway reducing the vertical clearance
- Deposits of ice on the building and/or temperature below -20 ° C.
- If lightning or any other potentially dangerous exceptional climatic conditions.
- It is strictly forbidden to use the anchor point beyond the limits specified in this document or in any other situation than that for which it is intended.
- The length of the absorbing lanyard is limited to 2 meters, unless otherwise directed in writing by the manufacturer for a specific project.
- The lanyard must be fitted with an energy absorber conform to the European standard EN355. If the energy absorber has been deployed, it is obligatory to discard the lanyard and replace it with a new lanyard.

10. Caution

- If the equipment is sold outside the country of origin, the dealer will provide the user instructions, the maintenance instructions for periodic examinations as well as the instructions for repair in the language of the region where the PPE is used.
- In order to reduce the height of fall it is recommended to install the Yellow Anchor Eye point 1,5 meter above the walkway level.
- It is forbidden to install the Yellow Anchor Eye anchor point under the walkway level.
- The engravings on the Yellow Anchor Eye must always remain readable.
- The user must be equipped with a lanyard with energy absorber limiting the dynamic forces after a fall to a maximum of 6kN.
- The planned date for the next inspection must always be marked on the warning plate.
- When transporting with other equipment, the anchoring device must be packed separately. It is not advisable to deposit other packages on the anchoring device to prevent damage.

11. Operational life of the installation

The operational life is a function of the building structure and of its capacity to maintain its physical properties in the course of time.

12. Engravings

An identification plate is installed near to the zone where the users attach themselves to the line. Our web portal Fallprotec Assistant generates the plate. It can be printed on a sticker provided by Fallprotec (climate proof). The commissioning date must be on the warning plate.

Manufactured by:

FALLPROTEC

FALLPROTEC SA
T: +352 26 55 09 30
F: +352 26 55 09 30 55
www.fallprotec.com

Installed by:

COMPANY NAME

DUMMY DEALER FALLPROTEC TE

This is where the address comes nr. 1
Some Town
Luxembourg
+971 (6) 74 80 84 2
www.businessname.online

SecuRope EVO horizontal/inclined

EN795-C:2012
TS16415:2013

**BEYOND THIS AREA WEARING A
HARNES AND SECURED BY A FALL
ARREST SYSTEM ARE MANDATORY**

Company: Geo Tech
Location: Project1

Number of users: 1 x max. 100 kg

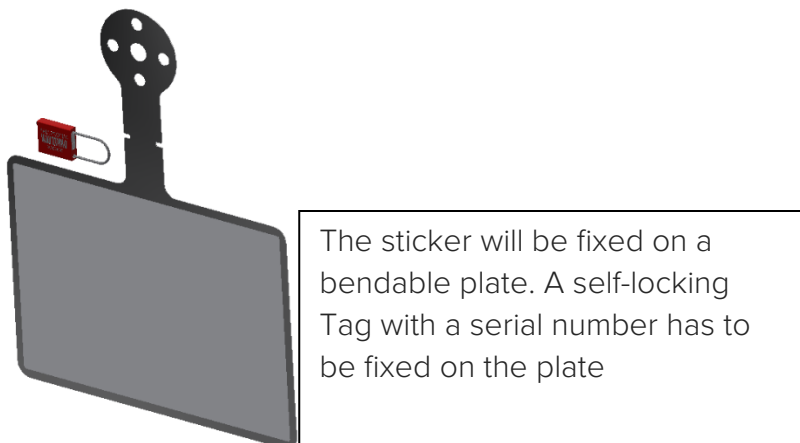
Serial #: 123453

Installation date: 2019-02-12

EN365



- 1 Manufacturer informations and a QR code to get direct access to all the informations related to the installation
- 2 Equipment type and applied standards.
- 3 Logo and installer name
- 4 Symbol indicating that it is mandatory to use a fallarrest harness according to EN355
- 5 Maximal number of users and their weights
- 6 Information about the installation place.
- 7 Commissioning date
- 8 It is mandatory to read the user manual before use.
- 9 The serial number of the self-locking tag



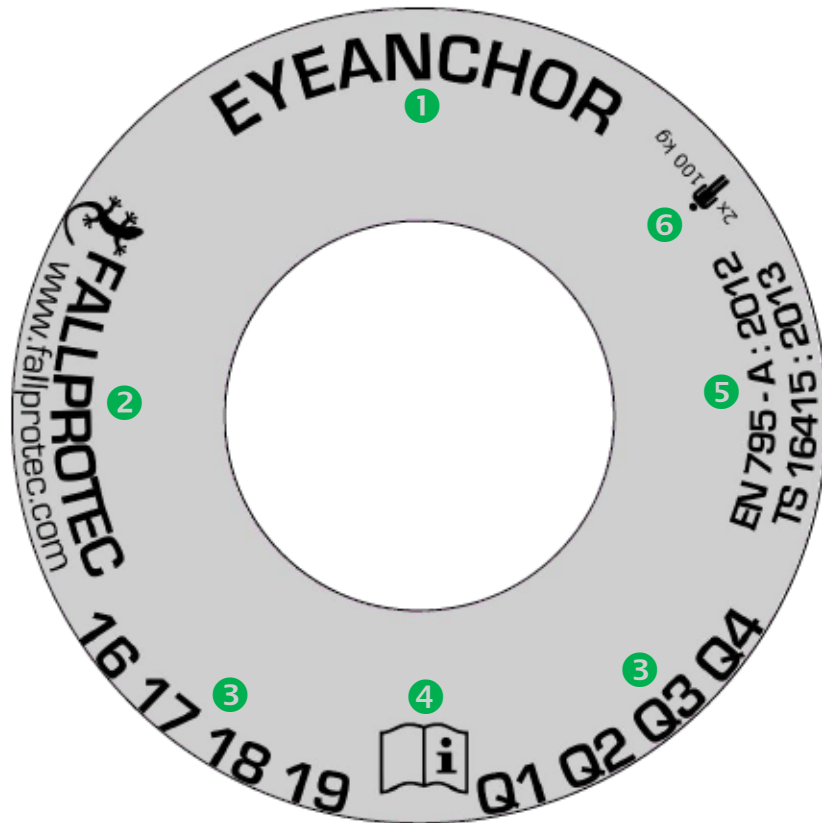


Fig. 2 Sticker

The Yellow Anchor Eye has following engravings:

- ❶ Model : EYEANCHOR
- ❷ Manufacturer Name : Fallprotec
- ❸ Date of manufacture (year and quarter punched during manufacture)
- ❹ An icon indicating that it is necessary to read this manual before use
- ❺ Number of the applicable standard and the date of application of the standard: EN795-A: 2012 type A and TS 16415: 2013 / A.
- ❻ Number of users : 2 people

13. Maintenance and inspection

- The Yellow Anchor Eye will be inspected by a competent person once a year and after the equipment has stopped a fall.
- A competent person will check the readability of the markings on the Yellow Anchor Eye.
- Any modification of equipment or any addition to the equipment cannot be made without the prior written approval of FALLPROTEC.

14. Identification sheet

An identification sheet must accompany the product during the duration of its use.

Identification sheet Yellow Anchor Eye

Type of equipment : Yellow Anchor Eye

Manufacturer:

FALLPROTEC SA.

43-45 Op Zaemer

L-4959 Bascharage

Luxembourg

Tel: +352 26 55 09 30

Fax: +352 26 55 09 30 55

Email: marketing@fallprotec.com

www.fallprotec.com

Marking of equipment: The anchor point is engraved with "FALLPROTEC"

The manufacturing date is marked on the anchor point

Date of purchase:

The date of first use:

Frequency of inspection: once a year

Expected life: 20 years

Date of 1st review	Review & repairs	Name of competent person	Signature of competent person	Date of the next review
After 1 year	Visual Cleaning of the Yellow Anchor Eye Maintenance work if necessary Control that anchor point is not deformed			Periodicity: Once a year

NOTE: It is the responsibility of the user to provide all required details as per table above